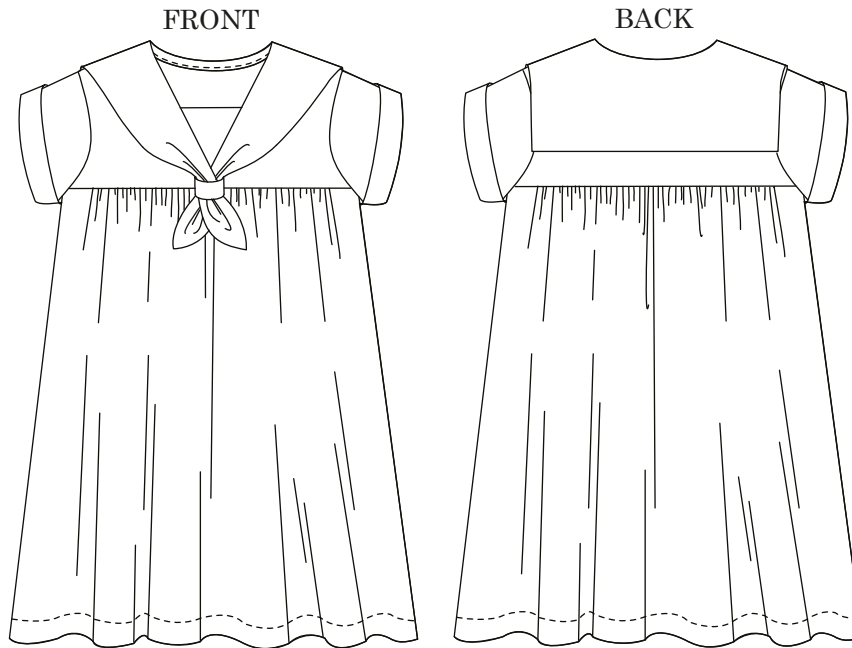


SKIPPER

INSPIRED BY THE SEA FARING HARBOUR OF RYE, OUR LITTLE SKIPPER WILL CHARM LANDLUBBERS AND SHIPS CREW EVERYWHERE.

SKILL LEVEL: INTERMEDIATE



FINISHED MEASUREMENTS

	3	4	5	6	7	8
Chest	67cm/26¼"	67.4cm/26½"	69cm/27¼"	71cm/28"	73cm/28¾"	75cm/29½"
CB Length	59.5cm/23½"	63.5cm/25"	67.5cm/26½"	71.5cm/28¾"	75.5cm/29¾"	79.5cm/31¼"

FABRIC REQUIREMENTS

	AGE 3	4-5	6-8
110-120cm/ 43½-47" (with or without nap)	2M/2¼yd	2.3M/2½yd	2.5M/2¾yd
140-150cm/55-60" (with or without nap)	1.5M/1¾yd	1.8M/2yd	2M/2¼yd

SUGGESTED FABRIC

FABRIC SUGGESTIONS - WE RECOMMEND MEDIUM TO LIGHTWEIGHT WOVEN FABRICS SUCH AS DENIM, COTTON CHAMBRAY, LAUNDERED LINEN OR LIGHTWEIGHT WOOL.

YOU WILL NEED

MATCHING THREAD.
DRESS POPPER X 1.
LIGHT WEIGHT INTERFACING X 0.5M/¾yd.
BIAS BINDING - 13MM/½" APPROXIMATELY 0.8M/1YD.

SIZE CHART

	3	4	5	6	7	8
Height	98cm/38½"	104cm/41"	110cm/43¼"	116cm/45½"	122cm/48"	128cm/50¼"
Chest	54cm/21¼"	56cm/22"	58cm/22¾"	60cm/23½"	62cm/24½"	64cm/25¼"

MERCHANT & MILLS

Printed for Rona, #MM81661

Before you begin!

PRINTING

Please print your pattern at 100%, DO NOT SCALE to fit paper. Before printing pattern, print out this page and measure the test square. The square should measure 10 x 10 cm (some printers will be different - experiment with scale to get the square exactly 10cm).

The screenshot shows a PDF viewer interface. On the left is a pattern page for 'SKIPPER' by Merchant & Mills. It includes a line drawing of a dress, finished measurements for sizes 3-8, fabric requirements, and a size chart. On the right are the printing settings. The printer is set to 'Canon iP4800 series 2' with 'Default Settings' as the preset. There is 1 copy, all pages, on A4 paper (210 by 297 mm) in portrait orientation. The scale is set to 100%. Other options like 'Auto Rotate', 'Show Notes', 'Print Entire Image', and 'Fill Entire Paper' are also visible. At the bottom are buttons for '?', 'PDF', 'Hide Details', 'Cancel', and 'Print'.

SKIPPER
INSPIRED BY THE SEA FARING HARBOUR OF RYE, OUR LITTLE SKIPPER WILL CHARM LANDLUBBERS AND SHIP CREW EVERYWHERE.
SKILL LEVEL: INTERMEDIATE

FINISHED MEASUREMENTS

	3	4	5	6	7	8
Chest	67cm/26"	67.5cm/26.5"	69cm/27"	71cm/28"	73cm/28.5"	75cm/29.5"
CB Length	39.5cm/15.5"	41.5cm/16.5"	43.5cm/17"	45.5cm/18"	47.5cm/18.5"	49.5cm/19.5"

FABRIC REQUIREMENTS

	AGE 3	4-5	6-8
110-120cm/43"-47" (with or without nap)	2.5M/29yd	2.5M/29yd	2.5M/29yd
140-150cm/55"-48" (with or without nap)	1.5M/17yd	1.5M/17yd	2M/22yd

SUGGESTED FABRIC
FABRIC SUGGESTIONS - WE RECOMMEND MEDIUM TO LIGHTWEIGHT WOVEN FABRICS SUCH AS DENIM, COTTON CHAMBRAY, LAUNDRERIES LINES OR LIGHTWEIGHT WOOL.

YOU WILL NEED
MATCHING THREAD, GREEN POPPER 3.5, LIGHT WEIGHT INTERFACING 3.0MM, BLAU BINDING - 10MM" APPROXIMATELY 6.0MM/YD.

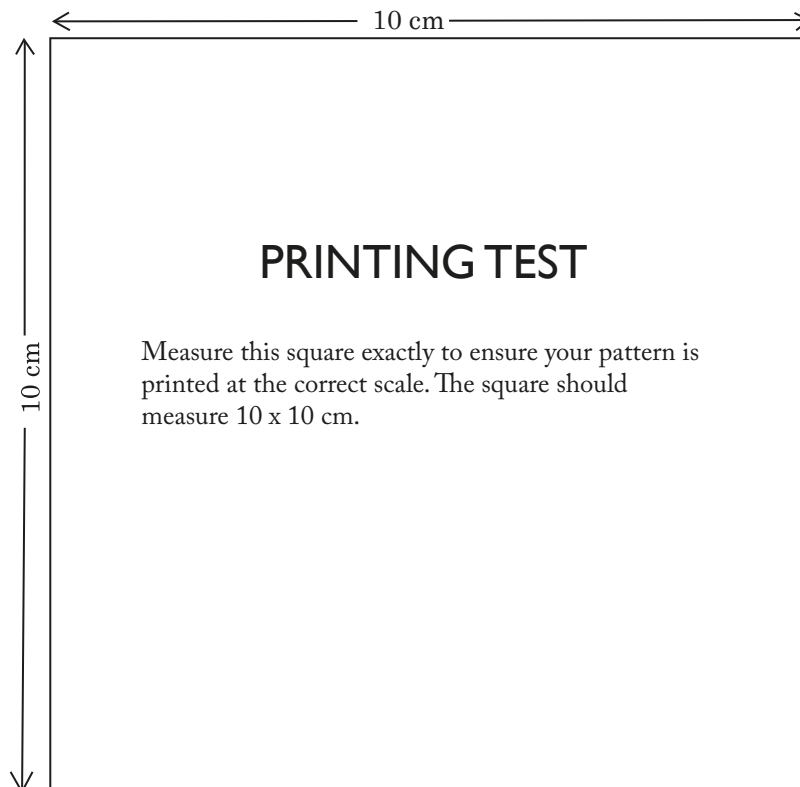
SIZE CHART

	3	4	5	6	7	8
Height	96cm/38"	104cm/41"	110cm/43"	116cm/45"	122cm/48"	128cm/50"
Chest	54cm/21"	56cm/22"	58cm/23"	60cm/24"	62cm/25"	64cm/25.5"

MERCHANT & MILLS

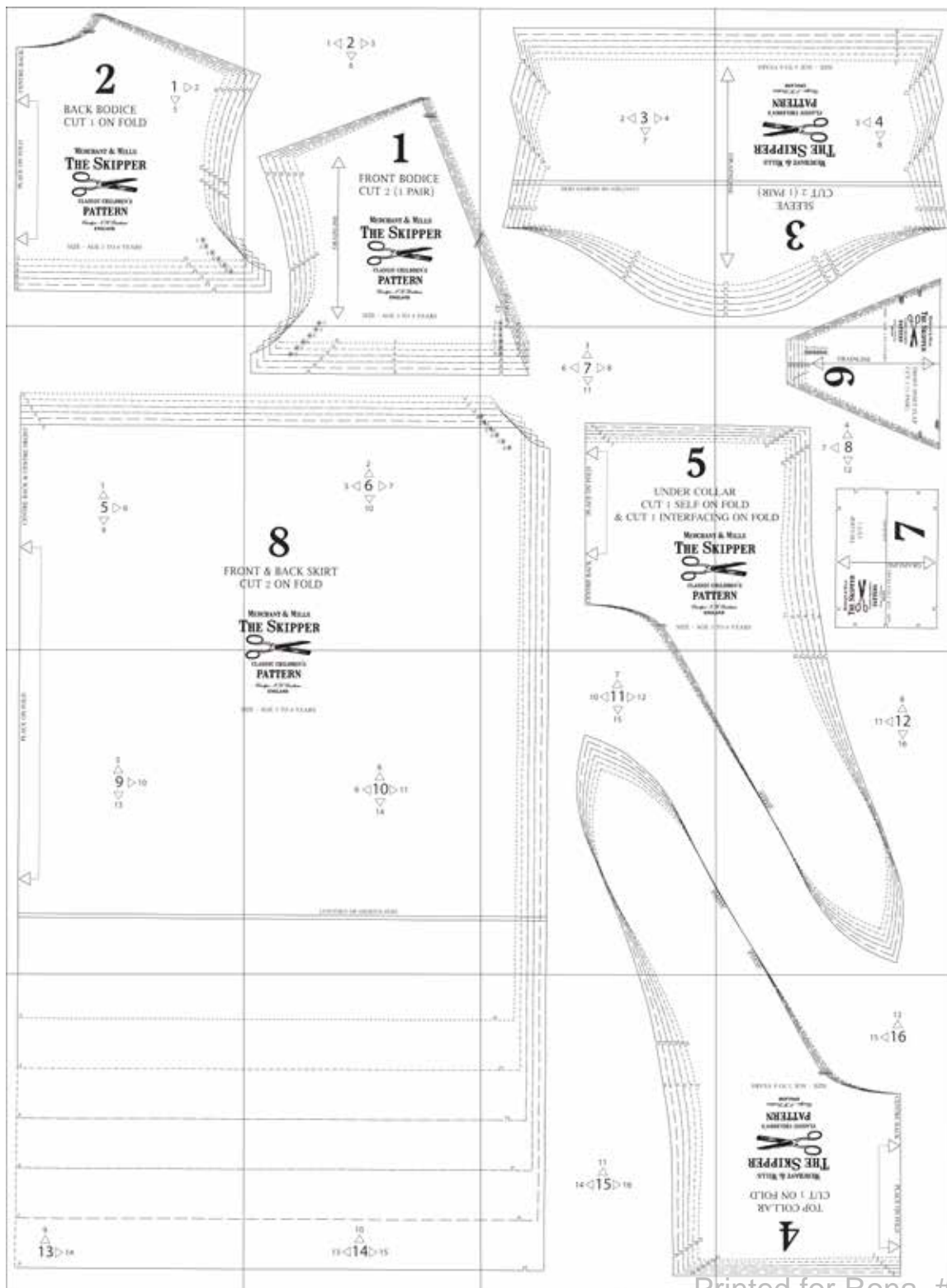
1 of 19

Printer: Canon iP4800 series 2
Presets: Default Settings
Copies: 1
Pages: All
Paper Size: A4 210 by 297 mm
Orientation: Portrait
Preview
Auto Rotate: ☒
Scale: 100%
Scale to Fit: ☐
Copies per page: 1
Show Notes: ☐
Print Entire Image: ☒
Fill Entire Paper: ☐
Cancel Print



How To Use This Pattern

The full size pattern has been made into tiled sections and is numbered 1 to 16. Each section will have a border which can be cut off on one side only, enabling you to have an underlap when you tape the sections together. There are also arrows with information on matching sections. We recommend sticking your pages together to create rows first, then attaching your rows.



CENTRE BACK

2

BACK BODICE
CUT 1 ON FOLD

1 ▷ 2
▽
5

PLACE ON FOLD

MERCHANT & MILLS
THE SKIPPER



CLASSIC CHILDREN'S
PATTERN

Carolyn A. H. Denham
ENGLAND

SIZE - AGE 3 TO 8 YEARS

3
4
5
6
7
8

3*
4*
5*
6*
7*
8*

1 ◁ 2 ▷ 3
▽
6

1

FRONT BODICE
CUT 2 (1 PAIR)

MERCHANT & MILLS
THE SKIPPER



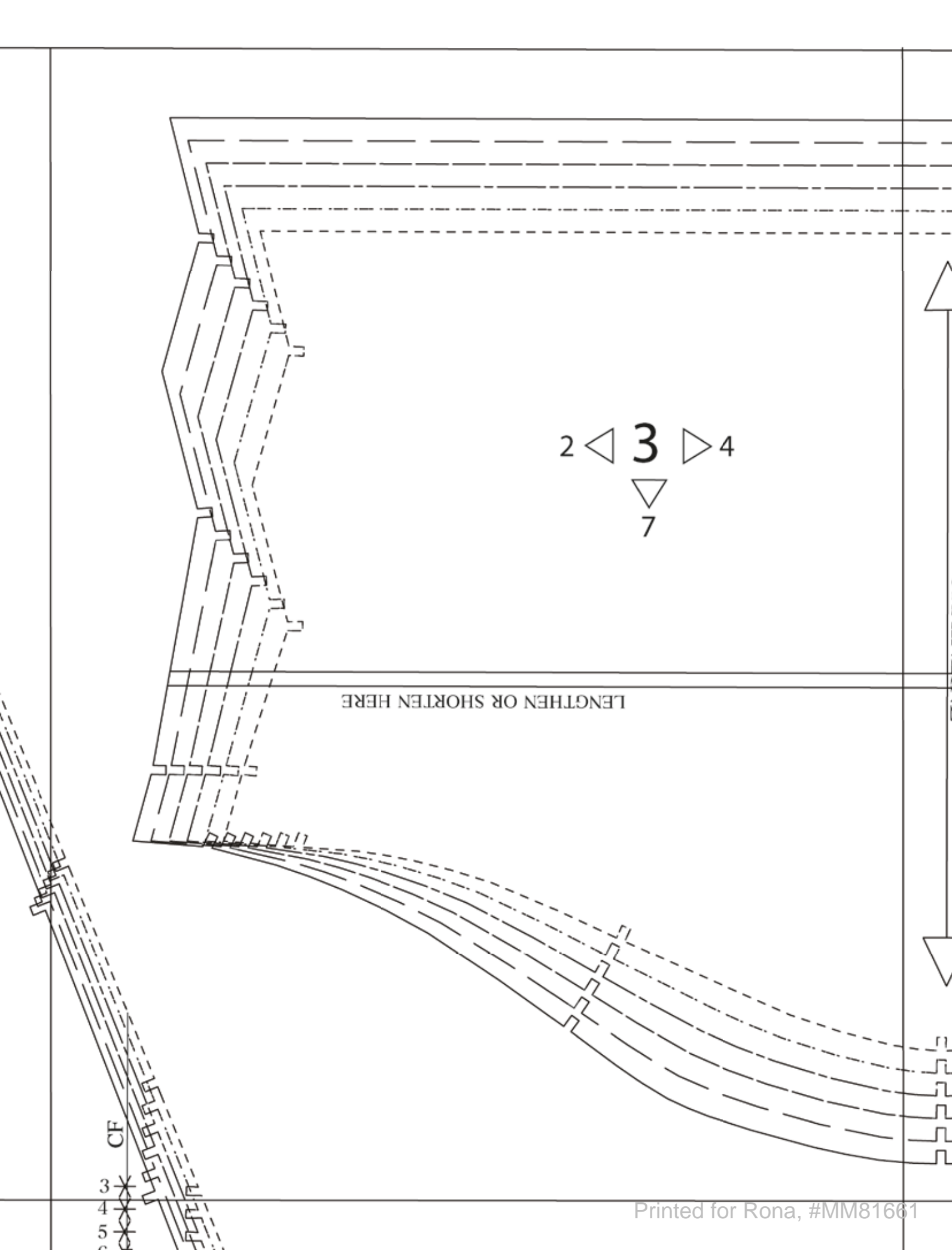
CLASSIC CHILDREN'S
PATTERN

Carolyn N.H. Donham
ENGLAND

SIZE - AGE 3 TO 8 YEARS



*3
*4
*5



2 ◁ 3 ▷ 4
▽
7

LENGTHEN OR SHORTEN HERE

CF

3

4

5

SIZE - AGE 3 TO 8 YEARS

ENGLAND
Zarebyr N. K. N. To Enham

PATTERN
CLASSIC CHILDREN'S



THE SKIPPER
MERCHANT & MILLS

SLEEVE CUT 2 (1 PAIR)

8

GRAINLINE

3  4

 8

SIZE - AGE 3 TO 6

ENGLAND

PATTERN

CLASSIC CHILDREN

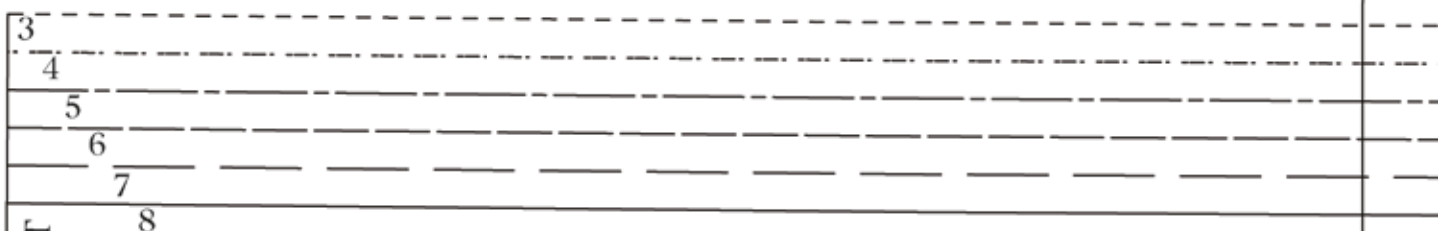
9
R

THE SKIP

MERCHANT & M...



Printed for Ronald #MM81661

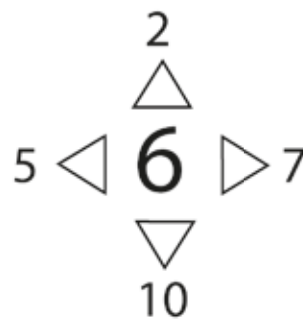
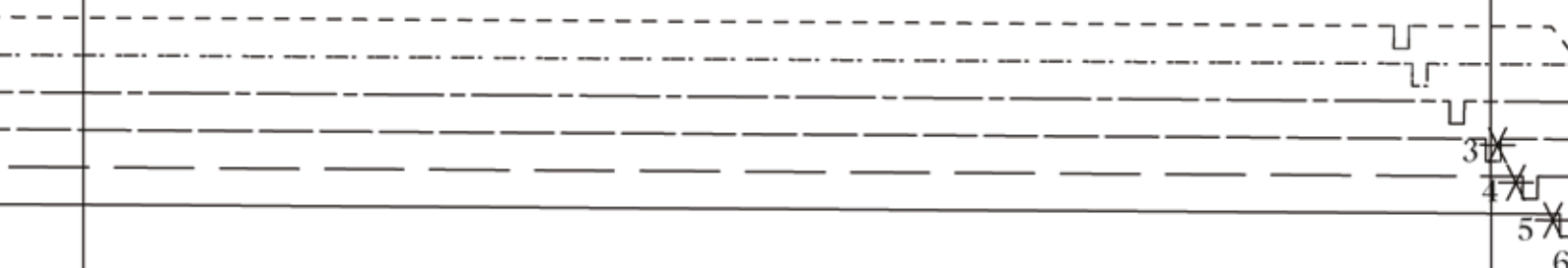
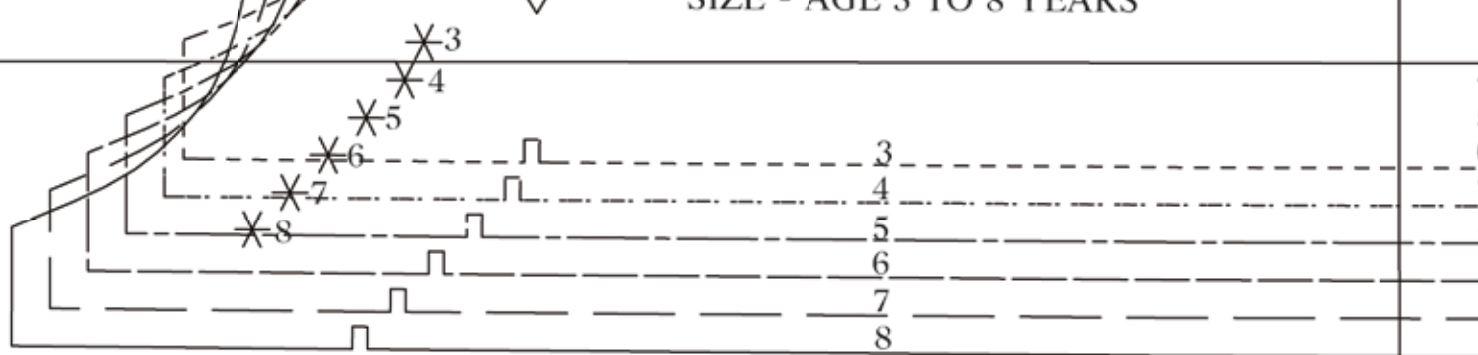


CENTRE BACK & CENTRE FRONT



FRONT
CU

ME
TH
O



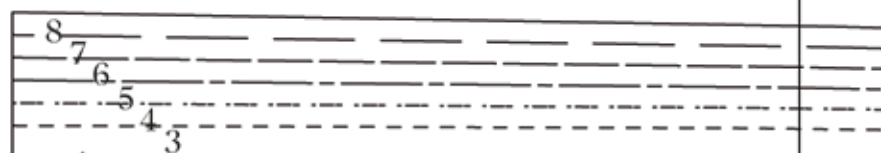
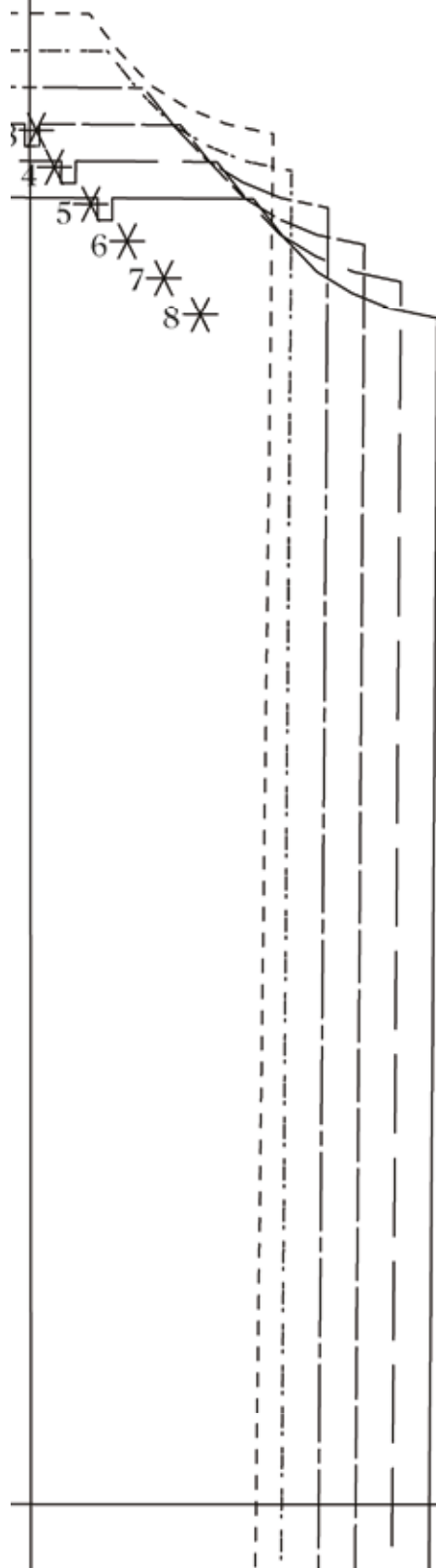
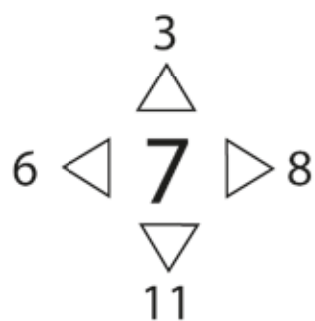
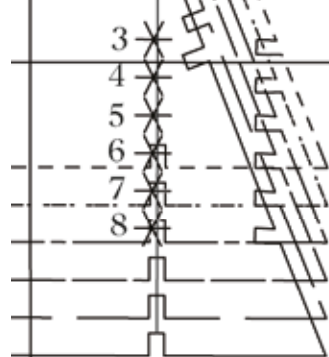
8

FRONT & BACK SKIRT
CUT 2 ON FOLD

MERCHANT & MILLS

THE SKIPPER

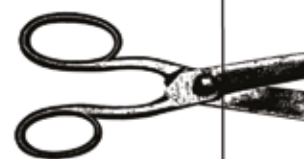




5

UNDER COLLAR
CUT 1 SELF ON FOLD
& CUT 1 INTERFACING

MERCHANT & M
THE SKIN



CLASSIC CHILD
PATTER

Carolyn A. H. Dene
ENGLAND

SIZE - AGE 3 TO 8

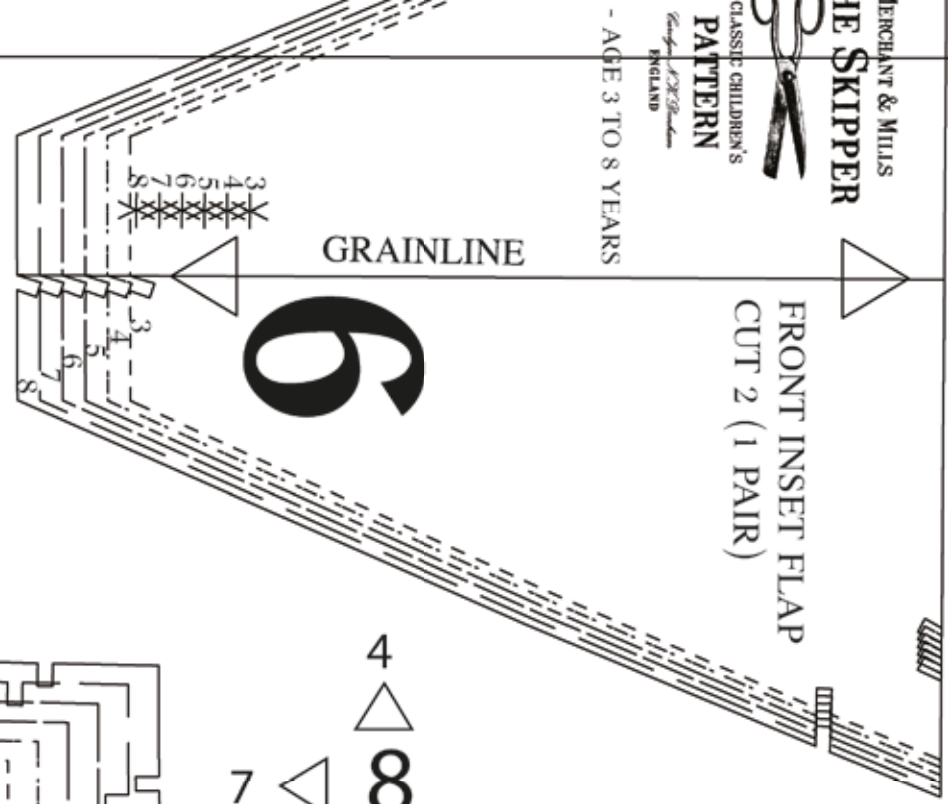
MERCHANT & MILLS
THE SKIPPER



CLASSIC CHILDREN'S
PATTERN

London N.W. Denham
ENGLAND

- AGE 3 TO 8 YEARS



4
7
8
12

DOLLAR
ON FOLD
CING ON FOLD

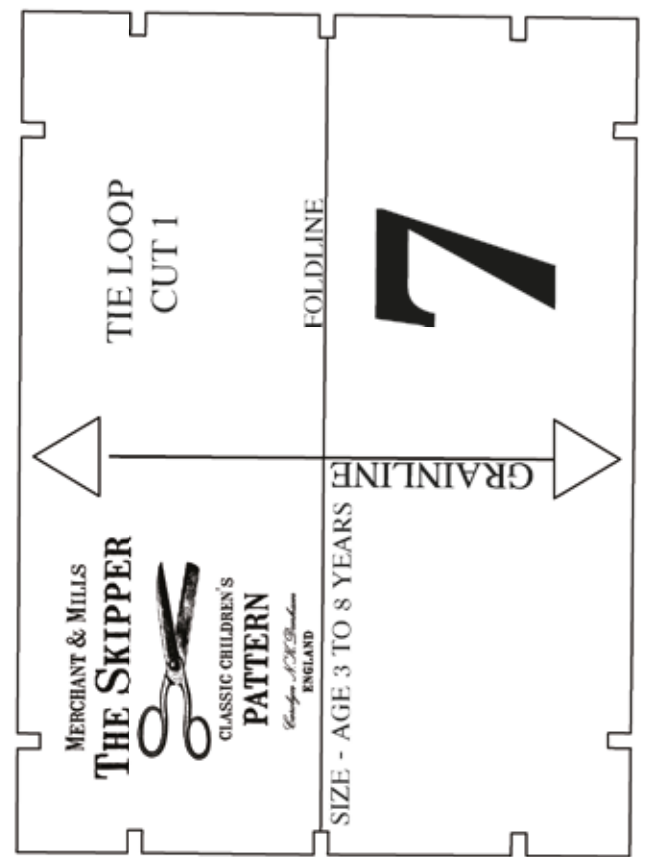
MERCHANT & MILLS
THE SKIPPER



CLASSIC CHILDREN'S
PATTERN

London N.W. Denham
ENGLAND

- AGE 3 TO 8 YEARS



PLACE ON FOLD

5
△
9 ▷ 10
▽
13



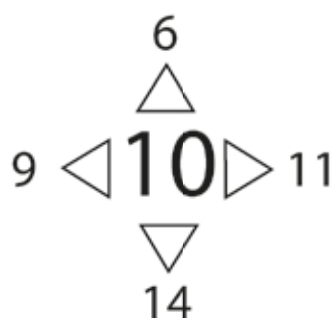
SIZE



CLASSIC CHILDREN'S
PATTERN

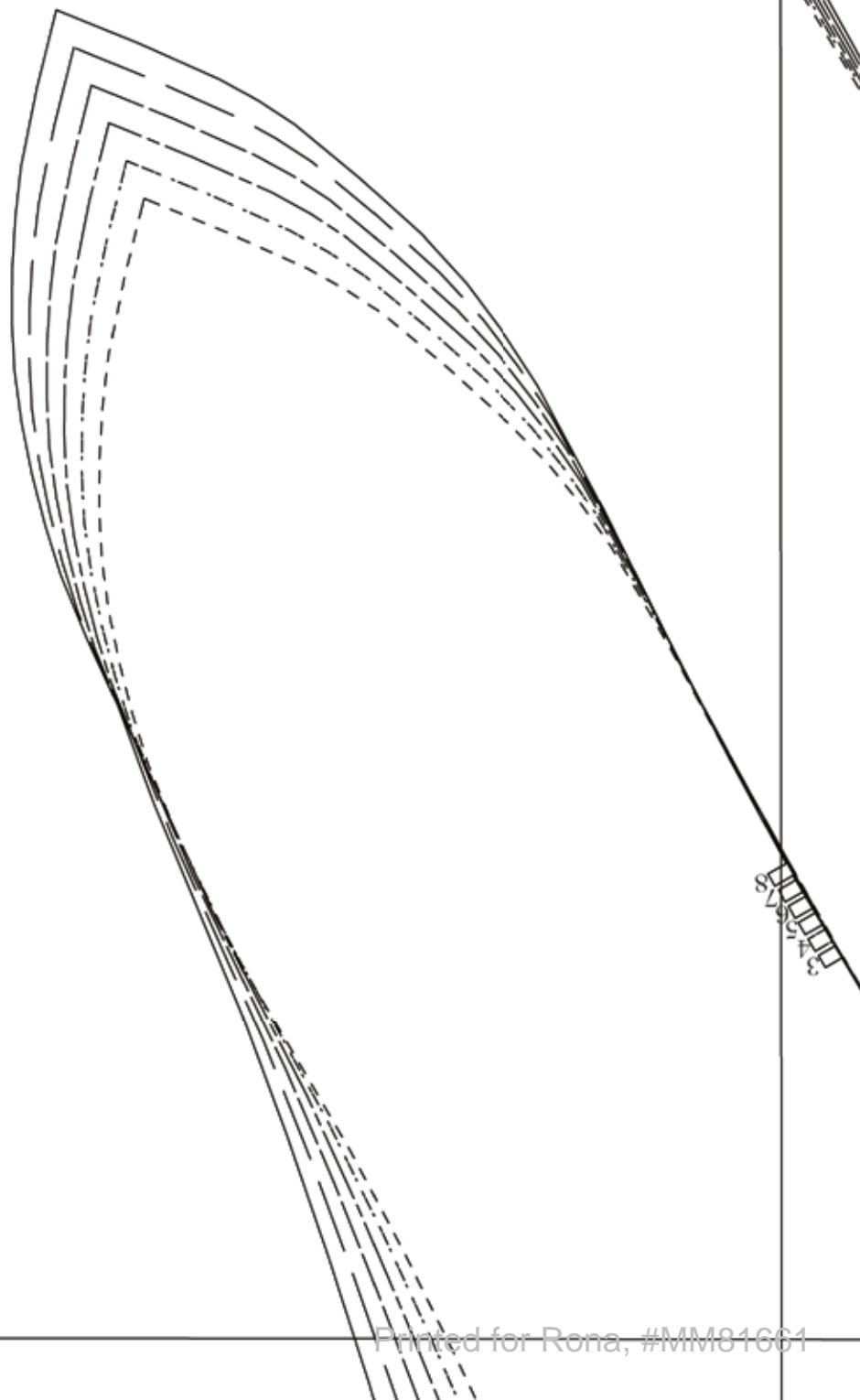
Carolyn A. H. Denham
ENGLAND

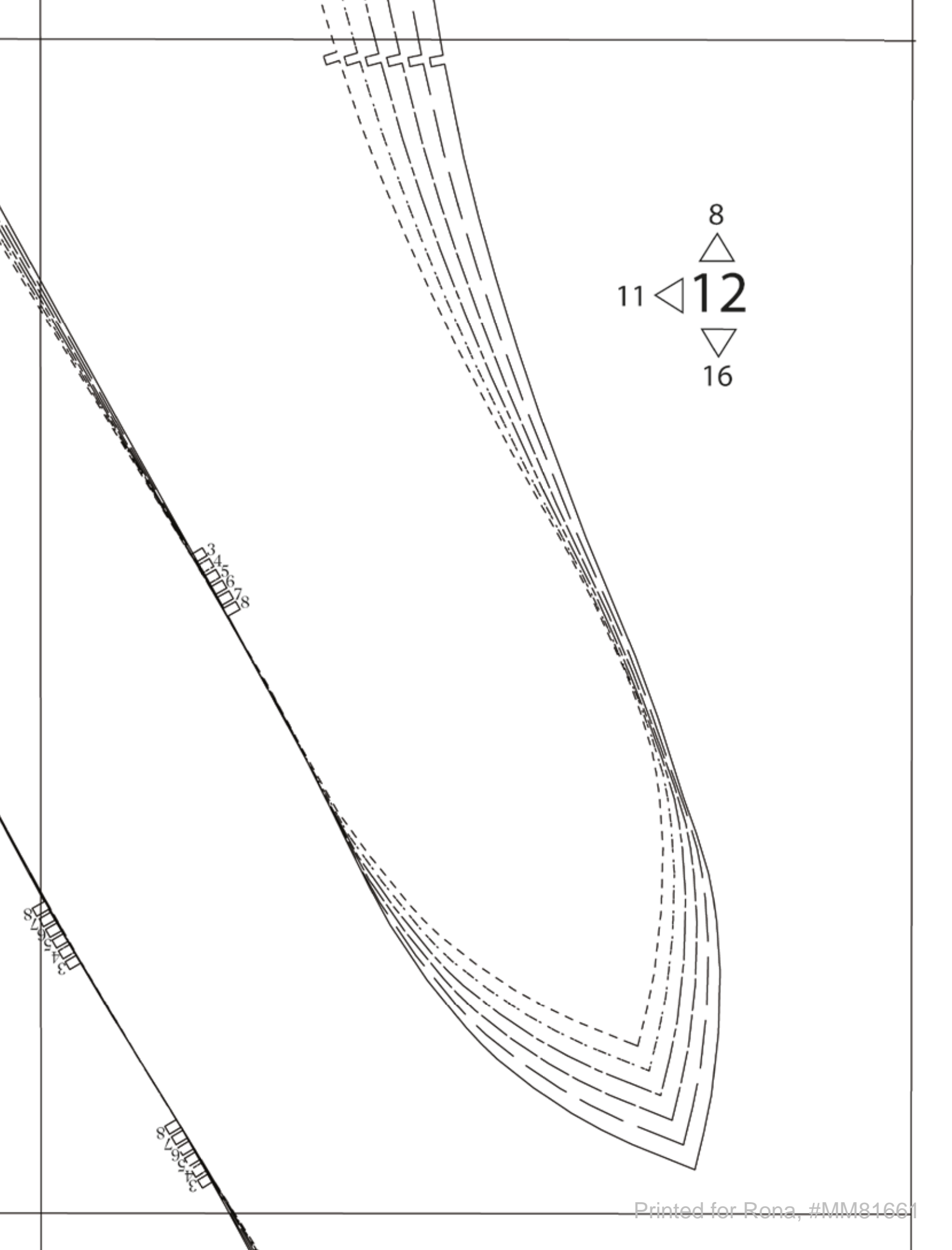
SIZE - AGE 3 TO 8 YEARS



LENGTHEN OR SHORTEN HERE

7
△
10 ◁ 11 ▷ 12
▽
15





3

4

5

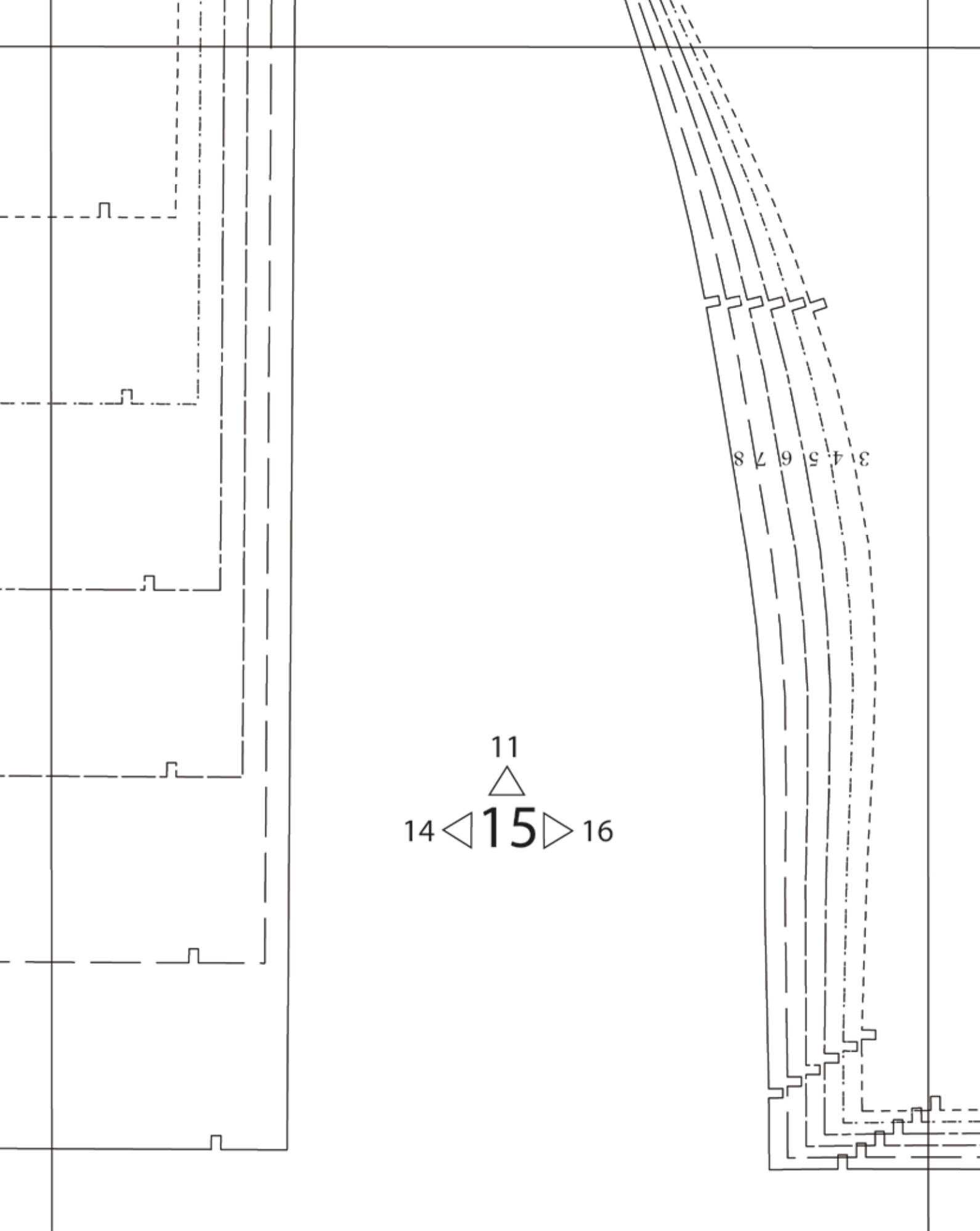
6

7

9
△
13 ▷ 14

8

10
△
13 ◁ **14** ▷ 15



12
△
15 △ **16**

SIZE - AGE 3 TO 8 YEARS

ENGLAND

Carolyne N.Y. Denham

PATTERN

CLASSIC CHILDREN'S



THE SKIPPER

MERCHANT & MILLS

CUT 1 ON FOLD

TOP COLLAR

4

CENTRE BACK

PLACE ON FOLD



3
4
5
6
7
8

